

144
N5 V6
copy 1

Views of
New Brunswick
N. J.

100 2000

100 2000

100 2000



SOLDIERS' MONUMENT

City of New Brunswick

New Jersey

Published by **L. H. NELSON CO.**, *Portland, Maine*
Publishers of Nelson's International Series of Souvenir
Books

Copyright, 1905, L. H. Nelson Co., Portland, Maine

NEW BRUNSWICK, originally called Prigmore Swamp, was chartered on September 1, 1874, prior to which time at this place, on the west bank of the Raritan River, many stirring events transpired, especially during the Revolutionary times.

The city is situated midway between Trenton and New York, and is beautifully located on the winding Raritan River. The old hotel of the noted Commodore Vanderbilt, still stands near the dock where his steamboat used to ply to and from New York.

New Brunswick is the county seat of Middlesex County and is the center of a network of trolleys, leading from all parts of the County and State. Its present population is about twenty-two thousand.

The City can well boast of its healthy location and especially its water plant, which is owned and controlled by the City. It also ranks high for its educational advantages, its schools being of the best, and it is the seat of Rutgers College, formerly Queen's College, which received its charter in 1766.

New Brunswick is also noted as an extensive manufacturing town and has two railroads, besides the Delaware and Raritan Canal. The City is adorned with numerous churches and public buildings.



GENERAL VIEW OF NEW BRUNSWICK
From the Steamboat Dock.





GEORGE STREET
Looking East from Washington Street.



CHURCH STREET
From Albany Street

CHURCH STREET, FROM PEACE STREET
Showing J. S. Stewart's Haberdashery, the P. J. Young Dry Goods Company, and
the Grand Union Tea Company.



COMMERCE SQUARE AND BURNET STREET FROM HIRAM STREET
Showing the Landsberg Store and Rust's Drug Store.



ALBANY STREET
From George Street, looking North



UNITED STATES GOVERNMENT POST OFFICE BUILDING
Corner George and Albany Streets. Completed in 1903 at a cost of about \$125,000



MIDDLESEX COUNTY BUILDINGS

County Jail, Court House and County Clerk's Office, corner Bayard and Elm Row.



NATIONAL BANK OF NEW JERSEY

Corner Church and Neilson Streets. Organized 1864; re-chartered 1894. Capital \$250,000.

PEOPLES NATIONAL BANK AND SAFE DEPOSIT COMPANY

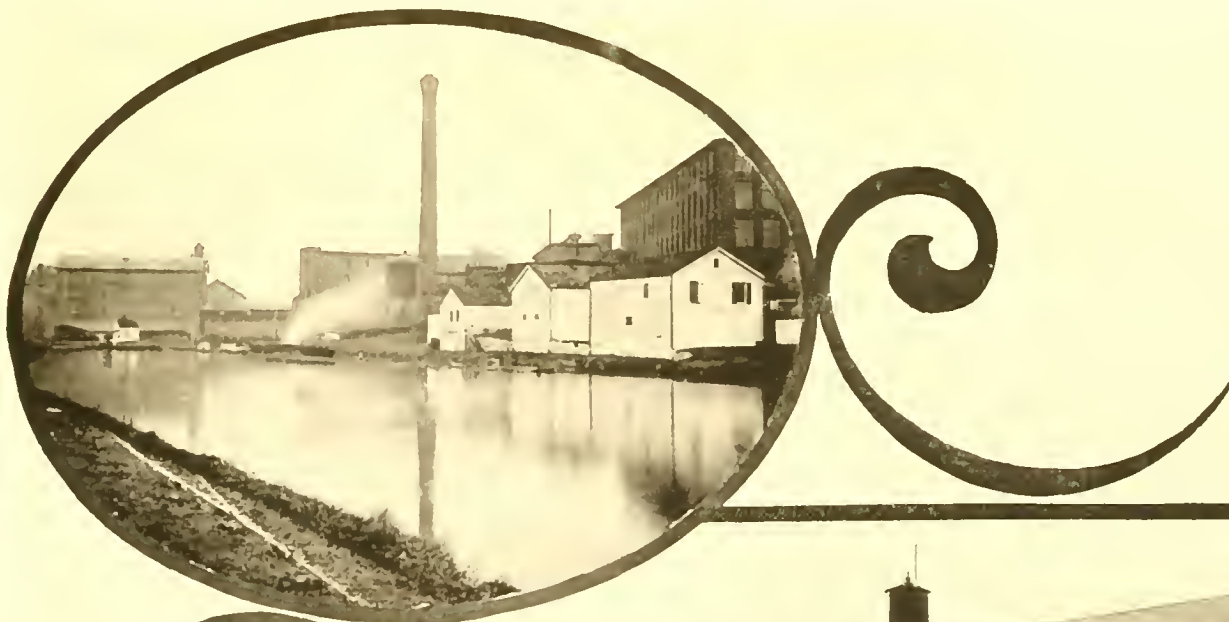
Corner George and Church Streets. Chartered 1837. Capital \$100,000



CORNER CHURCH AND GEORGE STREETS

Ayres & Relyea Grocery, Wall's Tailoring Establishment, Graham & McCormick's Restaurant.

NORFOLK AND NEW BRUNSWICK HOSIERY COMPANY



PROMINENT INDUSTRIES OF NEW BRUNSWICK

Johnson & Johnson, manufacturers of Red Cross supplies, antiseptic goods and absorbent cotton.

National Musical String Company, manufacturers of strings for musical instruments.



A GROUP OF THRIVING INDUSTRIES



F. W. WOOLWORTH & COMPANY, 5 AND 10 CENT STORE
Corner Church and Dennis Streets. The lower view shows a holiday crowd



PENNSYLVANIA RAILROAD STATION

One of the finest stations between New York and Philadelphia. Erected at a cost of \$100,000



TWO OF THE GREATEST WORKS OF STONE MASONRY IN THE WORLD

Pennsylvania Railroad Elevation from Neilson Street.

Pennsylvania Railroad Bridge over the Raritan River. It was two years in building and was finished in 1904. Cost about \$1,000,000



PHOENIX 3



HOOK AND LADDER NO. 1



LIBERTY HOSE AND CHEMICAL ENGINE



PROTECTION 5



ENGINE No 1



NEPTUNE 2

NEW BRUNSWICK'S SUPERB FIRE DEPARTMENT



WESTON'S MILLS

Where the city water is obtained. It was owned by private parties prior to its purchase by the City of New Brunswick. Now valued at \$1,000,000



CARNEGIE FREE PUBLIC LIBRARY

An attractive and artistic structure of granite and white pressed brick on Livingston Avenue. The gift of Andrew Carnegie to the City of New Brunswick. The corner-stone was laid in 1902. The building was completed in 1903 and cost \$55,000.



WELLS MEMORIAL HOSPITAL

Corner of Albany and Somerset Streets. The gift of Mrs. John Wells to the City of New Brunswick in memory of her husband. Supported by the county and by private donations. It has free and private wards.



LIVINGSTON AVENUE HIGH SCHOOL

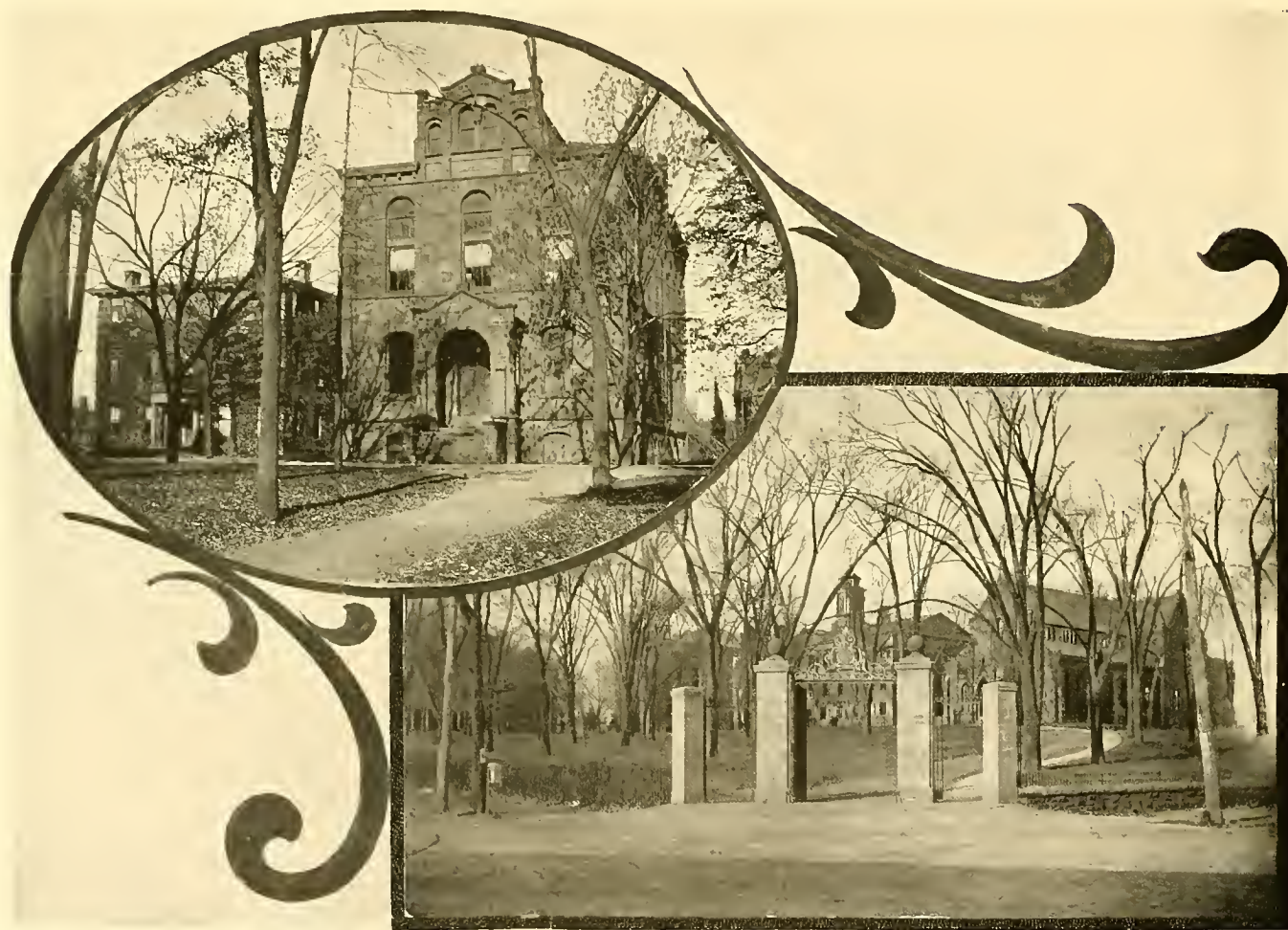
On Livingston Avenue at Redmond and Welton Streets. Erected in 1875. One of the best equipped school buildings in New Jersey.



TYPICAL SCHOOL BUILDINGS

THE PARK SCHOOL, Hale Street, near Commercial Avenue. Erected 1894.
A well-built schoolhouse.

THE WASHINGTON SCHOOL, French Street, corner Louis Street. Erected
1899. A fine specimen of modern school architecture.



RUTGERS COLLEGE

GEOLOGICAL HALL, erected 1871. It has a physical department, lecture rooms and laboratory.

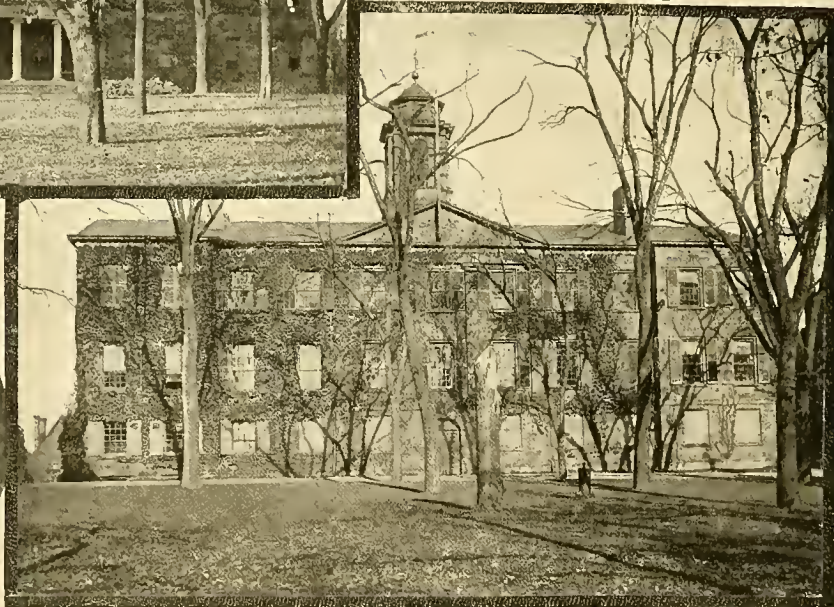
THE CAMPUS and the College Gate. A familiar view to thousands of graduates.



KIRKPATRICK CHAPEL AND LIBRARY
Erected 1872.

RUTGERS COLLEGE

BALLANTINE GYMNASIUM, the gift of Robert Ballantine to Rutgers College.
Completed in 1894.



RUTGERS COLLEGE

WINANTS HALL, built 1890. Serves as a dormitory and refectory. Accommodates one hundred students.

QUEEN'S COLLEGE. Part of Rutgers College. One of the oldest college buildings in the country.



TWO WELL-KNOWN EDUCATIONAL INSTITUTIONS

Miss Anable's School for Young Ladies, Bayard Street.

Columbia Hall or St. Agnes' Academy, corner Somerset and Division Streets.



Hertzog Hall

Suydam Hall

NEW BRUNSWICK THEOLOGICAL SEMINARY

Organized in New York City in 1784 and removed to New Brunswick in 1810, and to its present location in 1856. Governed by a board of superintendents under supervision of the General Synod of the Dutch Reformed Church. Supported by private donations and endowment funds and tuitions. Suydam Hall was the gift of John Suydam.



Sage Library, erected 1875

GENERAL VIEW OF SEMINARY

The Sage Library contains over forty thousand volumes



Church of the Sacred Heart, (Catholic) Throop Avenue. Organized 1883.



Second Reformed Church, "George" Street, corner Albany. Organized 1843.

TYPICAL CHURCH EDIFICES OF NEW BRUNSWICK



REPRESENTATIVE NEW BRUNSWICK CHURCHES

Livingston Avenue Baptist, Livingston Avenue, corner Welton Street. Organized 1822

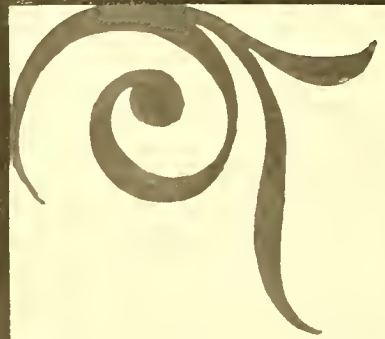
St. Peter's Church (Catholic), Somerset Street. Organized 1830. One of the largest congregations in New Jersey.



REPRESENTATIVE HOMES OF NEW BRUNSWICK

Residence of Mr. Charles J. Carpender, George Street.

Residence of Mr. R. W. Johnson, College Avenue and Hamilton Street. One of the finest in the city.



RESIDENCE OF MR. MILES ROSS

Also row of fine apartment houses, corner Livingston Avenue and Townsend Street.

UNION STREET

A beautiful street lined with homelike residences.



BRIDGE OVER THE RARITAN RIVER
Showing the Club House of the New Brunswick Boat Club. Incorporated 1892.

U.S. LIBRARY OF CONGRESS



0 014 207 147 2 ●