

PROJECT DIRECTORY

OWNER:
 BENCHMARK HOSPITALITY, INC.
 111 West Broadway, 9th Floor
 New York, NY 10038
 212/361-1400 fax
 212/361-1407 fax
ARCHITECT AND RENDER DESIGNER:
CJM Carter, Malloff, and Mendenhall Inc.
 250 Southwest Expressway
 General S. 30341
 710/574-1800 fax
 710/574-1802 fax

ME CONSULTANT:
 MFC ENGINEERS, Inc.
 2414 Long Road, NE
 Atlanta, GA 30328
 404/259-1400
 404/259-0555 fax
STRUCTURAL ENGINEER:
 TECHNICAL CONSULTING ENGINEERS, P.L.L.C.
 62 Westchester, 1105th St-5612
 Roseland, NJ 07068
 201/991-2111
 201/991-8108 fax
OWNER'S SEPARATE CONSULTANTS:
ACOUSTIC DESIGN:
 RSC CONCEPTS, Inc.
 100 W. 17th St., 2nd Fl., Box 5245
 New York, NY 10011-0245
 212/487-1922
 212/487-1884

OPERATOR:
 BENCHMARK HOSPITALITY, INC.
 111 West Broadway, 9th Floor
 New York, NY 10038
 212/361-1400 fax
 212/361-1407 fax
ARCHITECT AND RENDER DESIGNER:
CJM Carter, Malloff, and Mendenhall Inc.
 250 Southwest Expressway
 General S. 30341
 710/574-1800 fax
 710/574-1802 fax

PROJECT DESCRIPTION

XXX

MATERIALS LEGEND

GYPSUM WALLBOARD	ACOUSTICAL CEILING TILE
ROUGH WOOD	CONCRETE
NON-ENGINEERED	TILE OR MASONRY
STEEL	MARBLE, GRANITE OR STONE
ALUMINUM	BATT INSULATION
GLASS	EARTH
PLYWOOD	RIGID INSULATION
FINISHED WOOD TRIM	CONCRETE MASONRY UNIT
GRAVEL/BALLAST	CARPET
EXISTING CONSTRUCTION	QUARRY TILE

SYMBOLS LEGEND

PLAN	ELEVATION MARKER
DETAIL DESIGNATION	EXISTING SPOT ELEVATION
DETAIL	NEW SPOT ELEVATION
ELEVATION DESIGNATION	LOWER ELEVATION
SECTION DESIGNATION	DOOR DESIGNATION
ROOM DESIGNATION	WINDOW DESIGNATION
COLUMN DESIGNATION	STOREFRONT DESIGNATION
CENTERLINE	BREAK LINE
REVISION ARROW	INTERIOR FINISH DESIGNATION
AREA OF DETAIL	MATERIAL FINISH NUMBER
DETAIL NUMBER	CEILING FIRE
HOLD CLOUD	HEIGHT ABOVE FINISHED FLOOR
REVISION CLOUD	ROOM DESIGNATION
HOLD CLOUD	PARTITION TYPE
REVISION CLOUD	ARTWORK
REVISION CLOUD	DRAFTERY
REVISION CLOUD	REVISION CLOUD
REVISION CLOUD	REVISION CLOUD

ACCESSIBILITY DETAILS

WHEELCHAIR ACCESSIBLE COMPARTMENT

WHEELCHAIR ACCESSIBLE COMPARTMENT

CLEAR SPACE AT WATER CLOSETS

CLEAR WALL W/C

ACCESSIBLE WALKING SPACE

LAVATORY CLEARANCES

GENERAL NOTES

- The Contractor shall carefully review the Construction Documents, including all bid items, to be prepared through to reference to be made to the contract documents.
- "N.I.C." indicates work and/or materials, equipment and products not to be used. "N.I.C." work and/or materials, equipment and products are not to be used in the work unless the Contractor obtains written approval from the Architect. The Contractor shall be responsible for obtaining all necessary permits, licenses, and approvals for the work. The Contractor shall be responsible for obtaining all necessary permits, licenses, and approvals for the work. The Contractor shall be responsible for obtaining all necessary permits, licenses, and approvals for the work.
- The General Contractor shall provide all necessary blocking, bracing, framing, structural steel support members and other support for all finished partitions, including, but not limited to, "N.I.C." partitions, glass partitions, and other partitions. The Contractor shall be responsible for obtaining all necessary permits, licenses, and approvals for the work. The Contractor shall be responsible for obtaining all necessary permits, licenses, and approvals for the work.
- All work and/or materials, equipment, products and fixtures shall be installed per manufacturer's recommendations.
- Dimensions shall take precedence over notes. Dimensional format shall be noted on the floor prior to proceeding with the work to identify conflicts with existing conditions and dimensions. The Architect/Designer shall be notified of any dimensions resulting in conflicts. Dimensions are to be taken from the wall unless otherwise noted.
- Specific panel colors have been selected from specific manufacturer's color charts. The Contractor shall be responsible for obtaining all necessary permits, licenses, and approvals for the work. The Contractor shall be responsible for obtaining all necessary permits, licenses, and approvals for the work.
- All interior finish materials shall be minimum Class A Interior Finish with a maximum 0.15 and Smoke Development Grade 0.
- These drawings may not represent all existing conditions. General Contractor is responsible for verification of existing conditions in accordance with the work as defined herein and shall verify the condition of any improvements prior to proceeding with the referenced work.
- Contractor to take all necessary measures to ensure that any adjacent building or structure is not damaged from existing or proposed building work.
- All multiple wall studs are to be grouped with a common top/bottom chord. All general tolerances apply to these assemblies. See to be installed per manufacturer's recommendations.
- Work shall be performed per the requirements of local governing authorities and local codes.
- See conditions that are not dimensionally located and to be confirmed between work or confirmed with job grade survey or adjacent building files, on the plans and/or floor plan coordinate elevations.

CODE SUMMARY

The following summary represents the Architect's understanding and interpretation of the codes and ordinances referenced herein. They are intended for informational purposes only.

CODES:	BOCA NATIONAL BUILDING CODE, 1996 EDITION
M.E.C.:	INTERNATIONAL MECHANICAL CODE, 2000 EDITION
PLUMBING CODE:	NATIONAL STANDARD PLUMBING CODE, 2000 EDITION
ELECTRIC CODE:	NATIONAL ELECTRIC CODE, 1999 EDITION (NFPA 70)
ACCESSIBILITY:	N.I.C.A. 503-7 BARRIER FREE SUBCODE FAB/ANSI A 117.1/1992

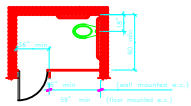
BUILDING SYSTEMS	CODE PROVISIONS
1.1.1 OCCUPANCY	MIXED USE
2.1.1.1 PURPOSE	RESIDENTIAL (R1)
2.1.1.2 CONSTRUCTION	TYPE 1B
TABLE 503 - ALLOWABLE HEIGHTS OF STOREYS	NOT LIMITED
TABLE 503 - AREA	NOT LIMITED

TABLE 503 - FIRE PROTECTION REQUIREMENTS:	CODE REQUIREMENT
BUILDING ELEMENT	
1 Exterior Walls (Noncombustible)	3
2 Noncombustible	See 705.2
3 Fire Walls and Party Walls	3
4 Fire Separation Assemblies	2
5 Fire Assembly of Walls	2
6 Mixed-use and fire area separation assemblies	Table 513.1.2
7 Fire Partitions Assemblies	Section 1011.4
8. Ceiling Joists and Gypsum	1
9 Smoke Barriers	1
10 Smoke Noncombustible Partitions	1
11 Interior Nonbearing Walls, Nonbearing Partitions, Enclosed Corridors, Stairs, (Other than non-fire rated) and (Other than non-fire rated) and (Other than non-fire rated)	3
12 Structural Member Supporting Walls	2
13 Floor construction including beams	2
14 Roof construction, including beams, joists and framing, trusses and raft	1 1/2
15 Decking	1 1/2
16 Membrane (Not less than 20" in height)	0
17 Membrane (Not less than 20" in height)	0
18 Vertical Shafts	2
19 Shaft Penetration	2
20 Shaft Penetration	2
21 Shaft Penetration	2
22 Shaft Penetration	2
23 Shaft Penetration	2
24 Shaft Penetration	2
25 Shaft Penetration	2
26 Shaft Penetration	2
27 Shaft Penetration	2
28 Shaft Penetration	2
29 Shaft Penetration	2
30 Shaft Penetration	2
31 Shaft Penetration	2
32 Shaft Penetration	2
33 Shaft Penetration	2
34 Shaft Penetration	2
35 Shaft Penetration	2
36 Shaft Penetration	2
37 Shaft Penetration	2
38 Shaft Penetration	2
39 Shaft Penetration	2
40 Shaft Penetration	2
41 Shaft Penetration	2
42 Shaft Penetration	2
43 Shaft Penetration	2
44 Shaft Penetration	2
45 Shaft Penetration	2
46 Shaft Penetration	2
47 Shaft Penetration	2
48 Shaft Penetration	2
49 Shaft Penetration	2
50 Shaft Penetration	2
51 Shaft Penetration	2
52 Shaft Penetration	2
53 Shaft Penetration	2
54 Shaft Penetration	2
55 Shaft Penetration	2
56 Shaft Penetration	2
57 Shaft Penetration	2
58 Shaft Penetration	2
59 Shaft Penetration	2
60 Shaft Penetration	2
61 Shaft Penetration	2
62 Shaft Penetration	2
63 Shaft Penetration	2
64 Shaft Penetration	2
65 Shaft Penetration	2
66 Shaft Penetration	2
67 Shaft Penetration	2
68 Shaft Penetration	2
69 Shaft Penetration	2
70 Shaft Penetration	2
71 Shaft Penetration	2
72 Shaft Penetration	2
73 Shaft Penetration	2
74 Shaft Penetration	2
75 Shaft Penetration	2
76 Shaft Penetration	2
77 Shaft Penetration	2
78 Shaft Penetration	2
79 Shaft Penetration	2
80 Shaft Penetration	2
81 Shaft Penetration	2
82 Shaft Penetration	2
83 Shaft Penetration	2
84 Shaft Penetration	2
85 Shaft Penetration	2
86 Shaft Penetration	2
87 Shaft Penetration	2
88 Shaft Penetration	2
89 Shaft Penetration	2
90 Shaft Penetration	2
91 Shaft Penetration	2
92 Shaft Penetration	2
93 Shaft Penetration	2
94 Shaft Penetration	2
95 Shaft Penetration	2
96 Shaft Penetration	2
97 Shaft Penetration	2
98 Shaft Penetration	2
99 Shaft Penetration	2
100 Shaft Penetration	2

AREA MAP

2001/2007/01 Health Conference Center & Residence

PROCESS PRINTING
 20 JANUARY 2003



Carter, Malloff, and Mendenhall Inc.

HELDRICH PLAZA
NEW BRUNSWICK, NEW JERSEY