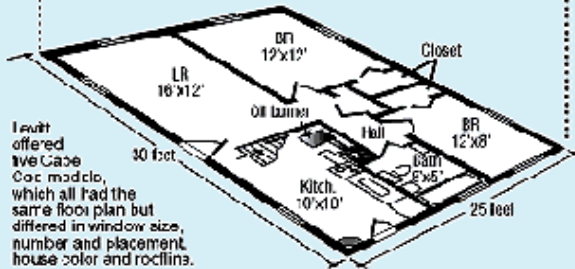
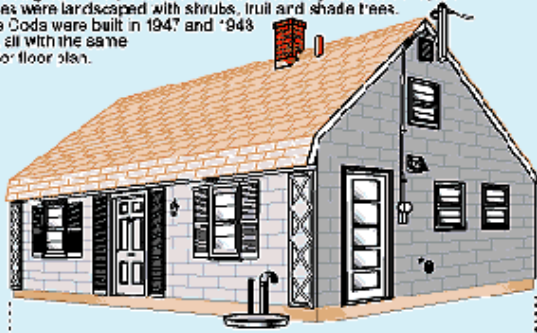


Levitt's Homes A look at the two types of homes Levitt built in the Levittown area.

The 1947 Cape Cod

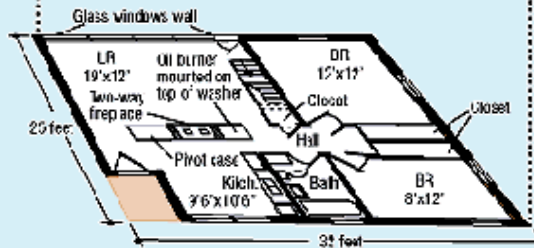
The Levitt Cape Cod offered 4 1/2 rooms on a 25-by-30-foot slab, with an unfinished expandable attic, and a kitchen full of appliances that included a Bendix washer. The kitchen was in the front - at the time a novel approach - and two bedrooms were in the rear. It rented for \$30-\$5 per month, depending on the lot, and was offered for sale a year later at \$7,500. Homes were landscaped with shrubs, fruit and shade trees. Cape Cods were built in 1947 and '48 only, all with the same interior floor plan.



Levitt offered five Cape Cod models, which all had the same floor plan but differed in window size, number and placement, house color and rooflines.

The 1949 Ranch

The Levitt Ranch, a so 4 1/2 rooms, was first offered in 1949. It was 50 square feet larger than the Cape Cod and retained the cape's floor plan, keeping the kitchen in the front, but pushing the living room to the rear and bedrooms to the side. The attic was unfinished. There was a two-way hearth between the fully equipped kitchen and the living room. It sold for \$7,993, with a monthly mortgage payment of \$58. The 1951 and 1951 models had the same basic floor plan as the earlier model.



The five 1949 ranch models, while differing in exterior features, all had the same floor plan and each came with a revolving storage cabinet and a 16-foot picture window in the rear of the house.



Newsday/Richard Cornett